

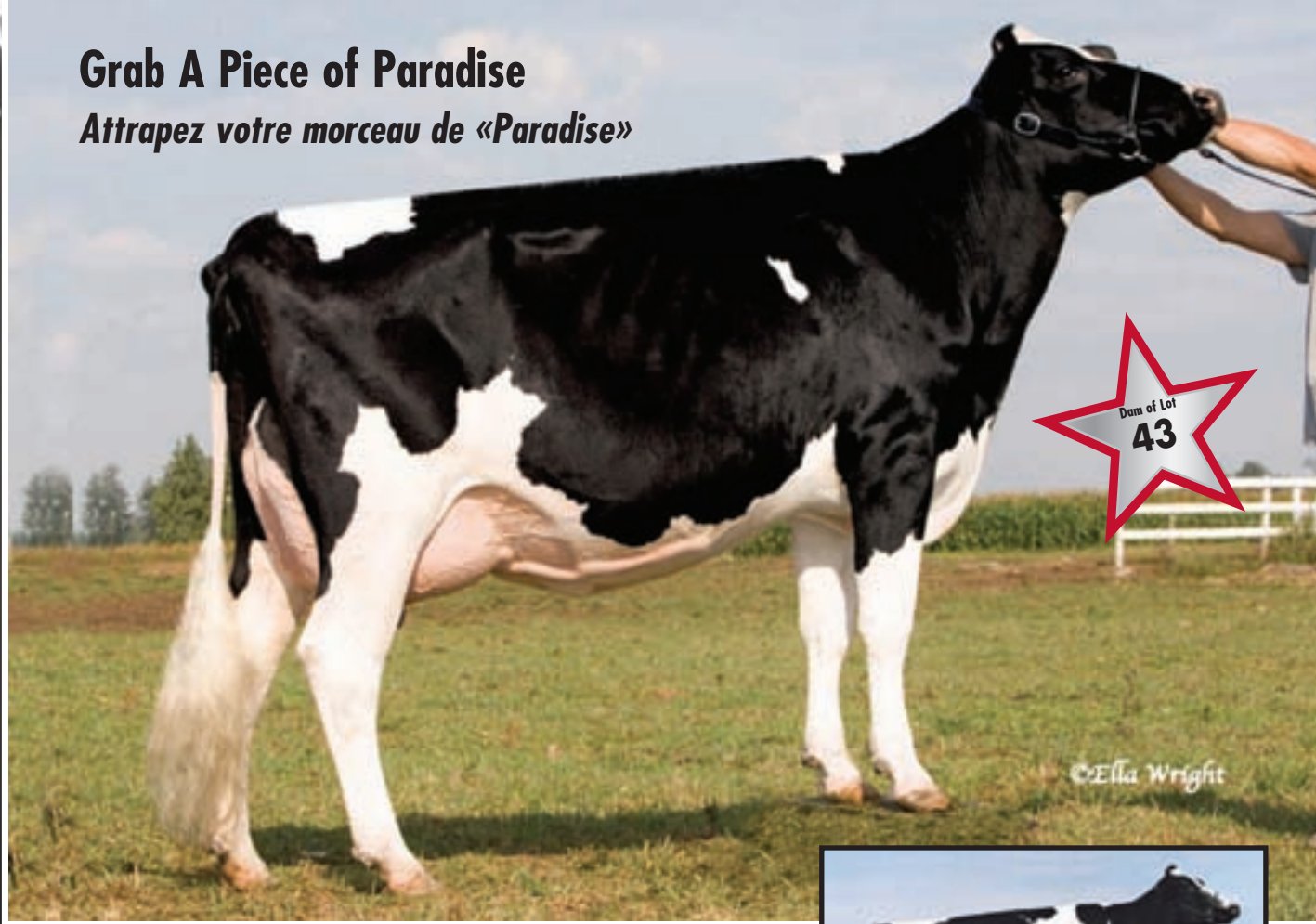
VANDYK-K

43

360-815-5966/360-815-2721

Grab A Piece of Paradise

Attrapez votre morceau de «Paradise»



©Ella Wright

Paradise-RV Dundee Persuasion-ET VG-88-2YR-USA

Dam of Lot 43



VANDYK-K PRECISION-ET

HOUSAF139303717 ET B:2008 Apr 08
 CAN-EBV-PA Aug*08 PA LPI+1837
 KG M+810 F+40 %F+0.09
 SCS 2.72 P+34 %P+0.07
 CAN-EBV-PA Aug*08 Conf+14
 MS+13 F&L+9 DS+11 R+6

4th & 5th Maternal Dam
 VANDYK-K MARK PATTY EX-94-2E-USA
 VANDYK-K MELVIN PAPPY VG-88-5YR-USA

BRAEDALE GOLDWYN

HOCANM10705608 *BLF*CVF GT
 GP-84-8YR-CAN EXTRA'05
 F&L:83 DS:84 R:87
 CAN-EBV Aug*08 99%Rel LPI+2642/99%
 KG M+843/60% F+62/95% %F+0.30
 SCS 2.45 P+40/84% %P+0.11
 CAN-EBV Aug*08 99%Rel Conf+17/99%
 MS+17 F&L+15 DS+11 R+5
 Progeny Data: 3931 Daus: 79% GP+
 8EX 581VG 2523GP 767G 52F
 3941 DAUS ME AVG: 11482 448 3.9 365 3.2
 AVG BCA: M217 F230 P221

SHOREMAR JAMES

HOCANM5902195 *BLF*CVF GT
 GP-81-2YR-CAN EXTRA'98
 CAN-EBV Aug*08 99%Rel LPI+275/36%
 KG M-146 F+18 %F+0.23 P+19 %P+0.23
 CAN-EBV Aug*08 99%Rel Conf+5

BRAEDALE BALER TWINE

HOCANF6860888 *BLF ET GT
 VG-86-2YR-CAN 23*(26/92)
 02-01 305 12096 591 4.9 402 3.3
 365 14019 690 4.9 477 3.4
 BCA 299 397 314
 1 LACT: 27051 1359 5.0 1005 3.7 KG

PARADISE-RV PERSUASION-ET

HOUSAF62137369 ET B:2005 Sep 07
 VG-88-2YR-USA
 USA-PTA Aug*08 51%Rel CTPI+1446
 LB M+553 F+18 %F-0.01
 SCS 2.98 P+20 %P+0.01
 USA-PTA Aug*08 57%Rel Conf+2.82

REGANCREST DUNDEE-ET

HOUSAM127640114 *BLF*CVF ET GT
 EX-95-6YR-USA ST'04
 CAN-EBV Aug*08 99%Rel LPI+1010/82%
 KG M+556 F-1 %F-0.20 P+22 %P+0.03
 CAN-EBV Aug*08 99%Rel Conf+13

VANDYK-K INTEGRITY PARADISE

HOUSAF17117235 GT
 EX-96-2E-USA DOM 2*(5/5)
 02-06 305 10764 385 3.6 354 3.3
 04-01 305 13835 536 3.9 503 3.6
 05-10 305 14996 646 4.3 513 3.4
 365 17953 758 4.2 621 3.5
 3 LACT: 60519 2449 4.0 2189 3.6 KG
 ALL-AMERICAN MATURE COW,4-YR,JR.3-YR
 RES. ALL-CANADIAN 4-YR 2000
 GRAND 2002 MADISON
 GRAND 2000 MADISON
 1ST MATURE COW 2002 MADISON
 1ST 4-YR 2000 MADISON
 Progeny Data: 0EX 1VG 0GP 0G 0F
 1 DAUS ME AVG: 13868 615 4.4 452 3.3
 AVG BCA: M262 F315 P274

Vandyk-K Integrity Paradise EX-96-2E-USA 2*

2nd Dam of Lot 43; All-American 3 Times
 Grand Champion World Dairy Expo 2000 & 2002

MAUGHLIN STORM

HOCANM5457798 *BLF*CVF*BRC ET GT
 EX-CAN EXTRA'96

BRAEDALE GYPSY GRAND

HOCANF5912235 GT
 VG-88-5YR-CAN 37*(0/185)

MARCREST ENCORE

HOUSAM2048702 *BLF*CVF GT
 EX-96-9YR-USA GM

SNOW-N DENISES DELLIA

HOUSAF12895802 *BLF*CVF GT
 EX-95-2E-USA GMD DOM 5*(0/25)

ROBTHOM INTEGRITY-ET

HOUSAM2150948 *BLF*CVF ET GT
 EX-96-11YR-USA EXTRA'99 GM

VANDYK-K BROKER PANSY-ET

HOUSAF15413512 ET
 EX-90-7YR-USA DOM
 05-06 305 17454 650 3.7 584 3.3
 365 18806 696 3.7 628 3.3
 5 LACT: 59359 2246 3.8 1964 3.3 KG
 Progeny Data: 0EX 1VG 0GP 0G 0F
 1 DAUS ME AVG: 13259 488 3.7 439 3.3
 AVG BCA: M251 F250 P266

Sale of Stars